



Optical testing solutions for manufacturing and R&D

Smarter
network
in sight.

EXFO

About this brochure

Explore our industry-leading portfolio of optical testing solutions for manufacturing and laboratory applications.

This brochure gives an overview of the following optical testing solutions: component test platform, benchtop tunable lasers, passive component testers, optical spectrum analyzers and tunable filters with adjustable bandwidth.

Reach out to us to benefit from best-in-class products and from 35+ years of expertise and dedicated customer service.

About EXFO

EXFO develops smarter test, monitoring and analytics solutions for the global communications industry. We are trusted advisers to fixed and mobile network operators, hyperscalers and leaders in the manufacturing, development and research sector. They count on us to deliver superior visibility and insights into network performance, service reliability and user experience. Building on our 35 years of innovation, EXFO's unique blend of equipment, software and services enable faster, more confident transformations related to 5G, cloud-native and fiber optic networks.

Table of contents

Optical spectrum analyzer.....	3
Component test platform.....	4
Passive component tester	5
Benchtop tunable lasers.....	6
Tunable filters	7

Optical spectrum analyzer

The OSA20 is the industry's most advanced optical spectrum analyzer for R&D and manufacturing.

Fast

The fastest OSA of its kind with a maximum sweep speed of 2000 nm/s.

High performance

The OSA20 features a state-of-the-art monochromator that yields a resolution bandwidth of 20 pm, steep edges and low stray light. This allows for full analysis of even extremely complex signals such as novel modulation formats, superchannels, flex-grid and DWDM signals down to 12.5 GHz spacing. Moreover, the instrument has a high wavelength accuracy over the full wavelength range with ± 10 pm specified over 1500-1640 nm.

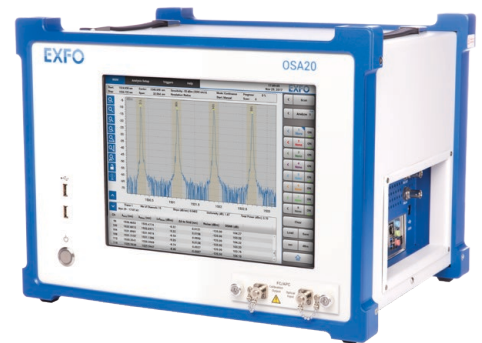
User-friendly interface

Navigation, scrolling and zooming using an intuitive 12-in color touchscreen, an industry first.

Target application analysis

Select from 8 different analysis modes available as standard:

OSA	Optical spectrum analyzer for general purpose analysis
WDM	Wavelength division multiplexing for CWDM or DWDM analysis
OFA	Optical fiber amplifier for EDFAs, SOAs, etc.
SML	Singlemode laser for DFB Lasers and external cavity lasers
MML	Multilongitudinal mode laser for Fabry-Perot lasers
BBS	Broadband source for SLEDs and fiber-based ASE sources
PCT	Passive component test for couplers and thin-film filters
RLT	Recirculating loop transmission for longhaul system evaluation



Key features

- Scan speed: up to 2000 nm/s
- Wavelength range: 1250-1700 nm
- Resolution bandwidth:
 - 20 pm native
 - Adjustable over 50-2000 pm
- Wavelength accuracy:
 - ± 10 pm over 1500-1640 nm
 - ± 25 pm over 1250-1700 nm
- Sampling resolution: 2 pm
- Modern interfaces

Component test platform

The CTP10 is a modular measurement platform for efficient testing of high port-count passive components in 24/7 operation. The CTP10 works with one or several of EXFO's sweeping tunable lasers to provide swept insertion loss (IL), polarization dependent loss (PDL) and return loss (RL) measurements with unprecedented performance in the industry.

Highest specifications at full speed

The CTP10 maintains industry-leading specifications even when used with a laser at 100 nm/s. You no longer have to compromise between speed and measurement accuracy as the CTP10 provides a 70-dB dynamic range in a single scan together with a 1-pm sampling resolution even at 100 nm/s.

The CTP10 is the ideal instrument to characterize advanced WDM components with high port-count, such as wavelength selective switches (WSS). It is also particularly well suited for optical testing of photonic integrated circuit (PIC), both in R&D and manufacturing environments.

Next-gen platform and modules

The following modules are available:

- IL RL OPM2** Insertion loss and return loss module with two optical detectors
- IL PDL** Insertion loss and polarization dependent loss module in C+L telecom bands
- IL PDL OPM2** Insertion loss and polarization dependent loss module operating across CTP10 spectral range and with two optical detectors
- SCAN SYNC** Optical sampling of swept wavelength lasers
- OPMx** Optical detector module with 2, 4 or 6 detectors
- FBC & FBC-M** Full-band combiner module for broadband swept measurements of IL & RL or IL & PDL, respectively
- PCMx** Photo-current meter module with 2 or 6 inputs



Key features

- Wavelength range: 1240-1680 nm
- Dynamic range: 70 dB in a single sweep
- IL resolution: 0.1 mdB
- Up to 50 detectors per platform
- Wavelength accuracy: ± 5 pm
- Sampling resolution: 1 pm (even at 100 nm/s)

Powerful intuitive GUI

The embedded software offers a powerful and intuitive GUI to graphically configure the test setup, perform measurement and analysis.

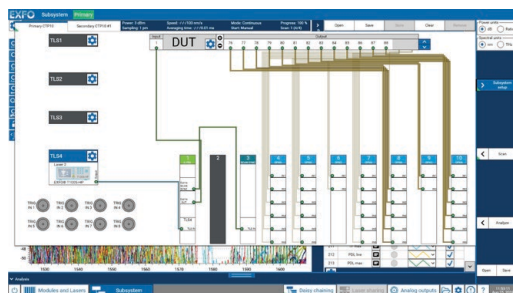


Figure 1. Configuration screen

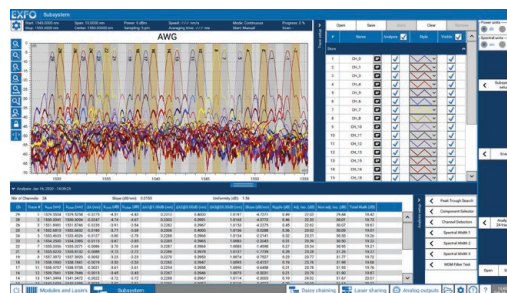


Figure 2. Measurement screen

Passive component tester

The CT440 is a versatile instrument for performing swept IL-PDL measurements of passive optical components. It works together with EXFO's line of sweeping tunable lasers to provide a 65-dB dynamic range with a wavelength accuracy of ± 5 pm. The CT440 is provided with a GUI software for direct operation from a PC.

Five CT440 models are available for various applications:

Model	Wavelength range	Measurement	DUT type
CT440-SMF	1240-1680 nm	IL	SMF
CT440-PM13	1260-1360 nm	IL	PMF
CT440-PM15	1440-1640 nm	IL	PMF
CT440-PDL-PM13	1260-1360 nm	IL, PDL	SMF
CT440-PDL-PM15	1440-1640 nm	IL, PDL	SMF



Key features

- Wavelength range: 1240 - 1680 nm
- Dynamic range in a single sweep: 65 dB
- Sampling resolution: 1 pm (even at 100 nm/s)
- Wavelength accuracy: ± 5 pm
- Up to 4 detectors

- The SMF model operates over the full band and performs IL measurements. Up to 4 lasers can be connected for seamless full-band swept measurements.
- The PM model offers a complete solution to characterize components with polarization-maintaining fiber.
- The PDL model is a turnkey solution for swept IL and PDL measurements.

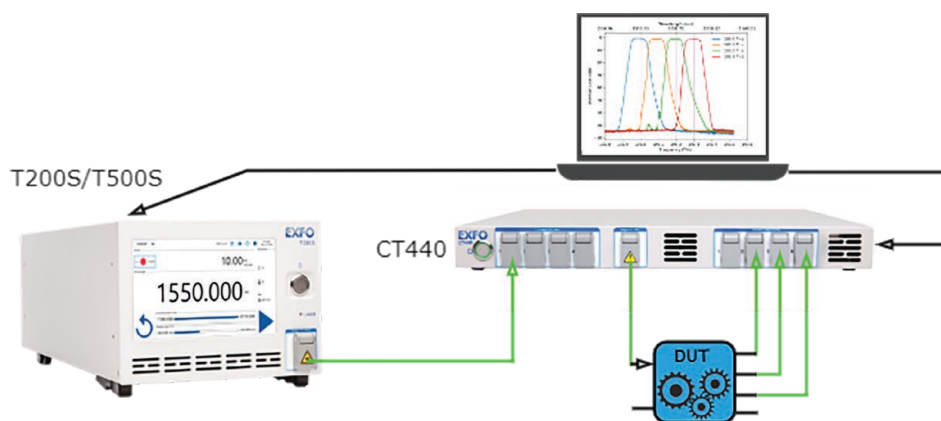


Figure 3. Typical measurement configuration using the CT440 component tester with a T200S/T500S tunable laser

Benchtop tunable lasers

The T200S and T500S constitute the most advanced and cost-effective solution for all R&D and manufacturing environments.

These lasers can be used as part of a swept test system together with the CTP10 or CT440 component tester for swept IL, RL and PDL measurements. As an alternative, both lasers can be used as standalone lasers in stepped mode.

Models available

The T200S portfolio features 2 models:

The /O and /CL lasers deliver 10 dBm of output power and are mainly dedicated to telecom applications.

The T500S portfolio features 5 models:

The /O, /ES, /SCL, /CL and /CLU lasers can be adjusted from 10 dBm to maximum available optical power of 13 dBm across specific wavelength ranges.



Key features

- Power: 10+ dBm (T500S) and 10 dBm (T200S)
- Tuning range: up to 180 nm
- Tuning speed: 200 nm/s
- Bidirectional sweep (T500S)
- Wavelength accuracy: ± 5 pm typical
- < 50 kHz linewidth
- Sweeping and stepping operation
- Full-band coverage with 3 lasers (T500S)
- Signal to noise ratio: 100 dB
- Compatible with the CTP10 and CT440 component testers
- Ethernet port

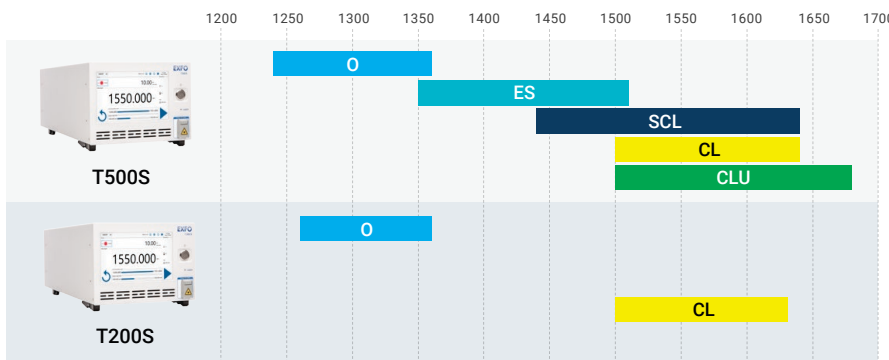


Figure 4. Spectral coverage of the various T200S-T500S models

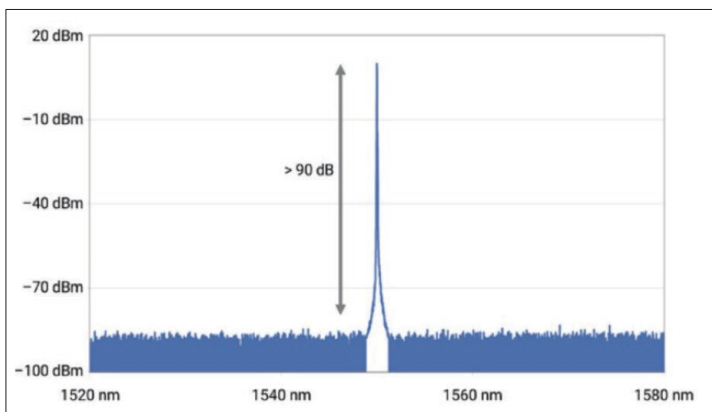


Figure 5. High power and high dynamic range

Tunable filters

The XTA-50 and XTM-50 are wavelength tunable and bandwidth adjustable filters. The use of bulk optics in combination with diffraction gratings leads to high selectivity, low insertion losses and dispersion. Thanks to the adjustable bandwidth and very steep edges, the XT filters are a reference for precise filtering of a channel or even of a subdivision of a channel.

Models available

Model	Wavelength range	Bandwidth	Slope
Standard	1450–1650 nm	50–950 pm (6.25–120 GHz)	500 dB/nm
Ultrafine	1480–1620 nm	32–650 pm (4–80 GHz)	800 dB/nm
Wide	1525–1610 nm	50–5000 pm (6.25–625 GHz)	350-500 dB/nm
O-band	1260–1360 nm	50–900 pm (8–160 GHz)	500 dB/nm

Manual and automated versions

XTA-50 Automated wavelength tuning and bandwidth adjustment

XTM-50 Manual wavelength tuning and bandwidth adjustment



Key features

- Wavelength and bandwidth adjustable
- Manual (XTM-50) and automated (XTA-50) versions
- IL: < 5 dB
- Sharp roll-off
- SMF and PMF versions
- O-band model available

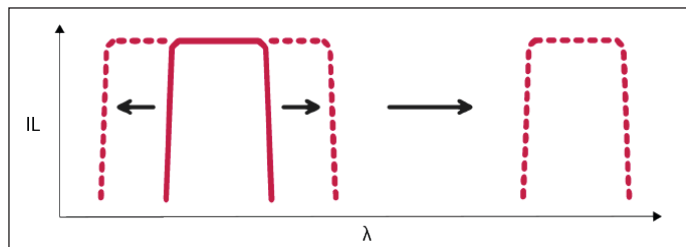


Figure 6. Bandwidth and wavelength tuning

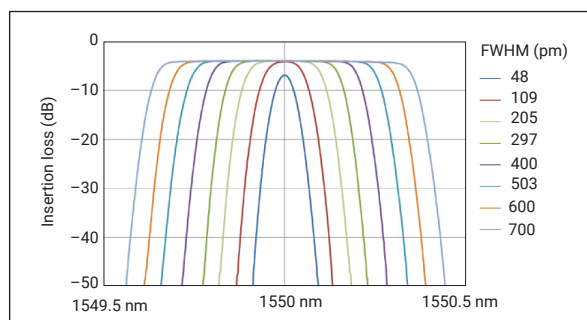


Figure 7. Bandwidth tuning

Glossary

IL: insertion loss

RL: return loss

SMF: singlemode fiber

PMF: polarization-maintaining optical fiber

Sales and customer service

EXFO Headquarters

400 Godin Avenue
Quebec City, Quebec G1M 2K2 CANADA
T: +1 800 663-3936 (U.S. and Canada)

EXFO America Inc.

3400 Waterview Parkway, Suite 100
Richardson, TX 75080 USA
T: +1 800 663-3936 (U.S. and Canada)

EXFO Europe Ltd.

Winchester House
School Lane, Chandlers Ford, SO53 4DG UK
T: +800 22 55 39 36 (+800 CALL EXFO; from most European countries)
Sales: +44 2380 246 810

EXFO Asia Pacific PTE Ltd.

62 Ubi Road 1, #09-01/02
Oxley Biz Hub 2, SINGAPORE 408 734
T: +65 6333 8241

Smarter
network
in sight.

EXFO