

Faster FTTH activation, right the first time with Optical Explorer



Great customer experience starts with smooth service activation.

Making sure that the drop fiber installation is done right the first time and knowing what to do if turn-up fails is vital for network operator profitability.

Activating new customers and restoring service

Certify drop installation, confirm power levels, troubleshoot faulty installs with Optical Explorer, which can pinpoint any faults in the last mile (defective field-assembled connector, poor mating at the drop terminal or a crushed jumper in the splitter cabinet). The tester also provides guidance on corrective steps.

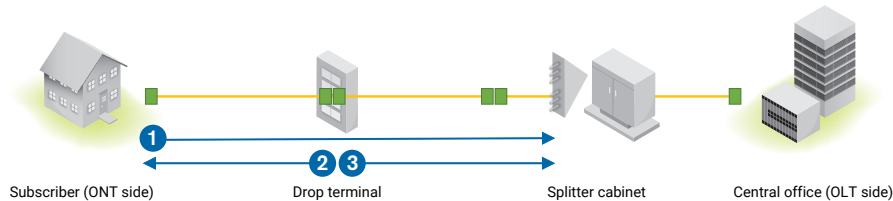
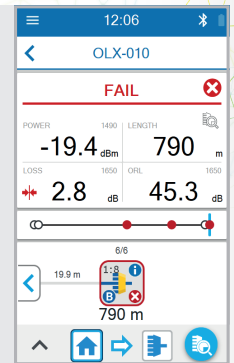
Sometimes the root cause of low or no power issue is beyond the splitter and requires intervention at the Central Office or on the feeder fiber. A clear diagnosis showing that the last mile is not faulty will avoid chasing problems at the wrong places.

Optical Explorer will confirm if the installed drop section meets the loss budget. This ensures full control and accountability with various field crews.

Install drop, activate and troubleshoot from inside premises

1

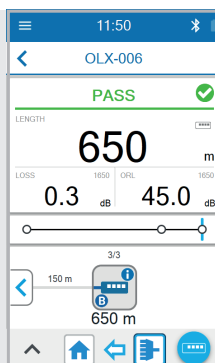
- Check power, ORL, length and loss to splitter
- Confirm splitter continuity and no excess loss in splitter cabinet
- Find faults up to splitter
- Confirm loss is within budget up to a demarcation point



Activate and troubleshoot from outside premises

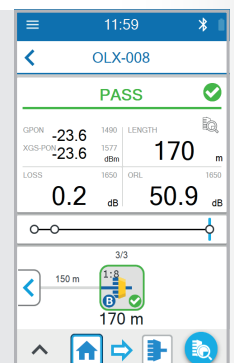
2

- Check ORL, length and loss to ONT
- Confirm ONT is connected
- Find faults up to ONT



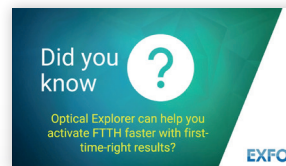
3

- Check power, ORL, length and loss to splitter
- Confirm continuity at splitter and no excess loss in splitter cabinet
- Find faults up to splitter



Technicians are now empowered to troubleshoot fiber links on the spot, avoiding the need for level-2 support or repeat truck rolls.

Improved customer experience, robust networks and profitability is at hand!



Watch this 2-min clip for more.



Complete FTTH service turn-up and troubleshooting solutions

Close more jobs on the first try with these dedicated kits for operators and contractors



WITH EXFO ADVISOR 5-STAR RATING

Don't delay activation, find and fix fiber-related issues on the spot!

Verify and troubleshoot fiber links

Optical Explorer (OX1)

- Easy to use, no need for optical expertise to start tests and understand results
- Time-saving device with ultrafast measurements (optical power, link length, loss, ORL, fault identification)
- No downtime, no hidden ownership costs, no repeat truck rolls

Increase activation done right the first time with these models:

NEW! OX1-Pro-M-PPM (dual-layer PON)

OX1-Pro-M (single-layer PON)

OX1-Pro-MI (single-layer PON, also includes 1310/1550 nm)



FEATURING NEW GPON CAPABILITIES

Deliver outstanding QoE. Validate bandwidth speed and monitor network performance

EX1

- Industry's most compact solution for GPON ONT emulation and troubleshooting
- Full line rate Gigabit speed test for optical, electrical and WiFi interfaces
- Completely controlled via your iOS or Android smart device for maximum flexibility



FULLY AUTOMATED FIBER INSPECTION SOLUTION

Eliminate the no.1 cause of network failures

Ensure connector health

FIP-435B

- Fully automated wireless fiber inspection scope delivering fast and consistent test results
- Auto-detect, auto-center, auto-focus and auto-capture
- Automated pass/fail analysis with LED indicator based on industry standards, auto-save and auto-report (PDF)

Optical cleaning kit



For illustrative purposes only. Each product comes packed in its own bag.

ORDER NOW!

EXFO