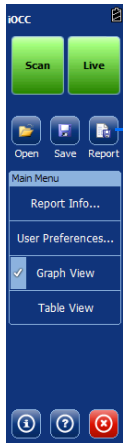


## Generating Reports



1 Tap.

Report Info

General Information

Job ID:

Port ID:

Operator:

Customer:

Location:

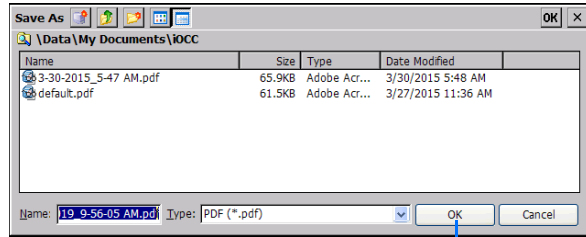
Comments:

Clear Values

Generate Cancel

2 Change the information as needed.

3 Tap.

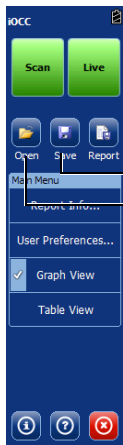


4 Change the location, file name and file type as needed.

5 Tap.

## Saving and Opening Acquisition Files

You can save the current acquisition or open saved acquisitions directly from the main window.

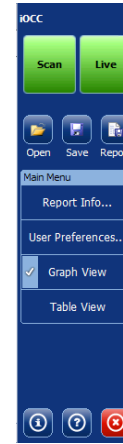


Saves file.

Opens file.

Change the location, file name and file type as needed, depending on whether you are saving or opening a file. Tap **OK** to close the window and return to the main window.

## Setting up Your Unit



1 Tap.

2 Change the information as needed.

User Preferences

Display

Spectral unit:  Sets the spectral units.

Choose the default view that will be displayed on a new measurement

Default view:  Sets the default view in the main window.

Analysis Parameters

Detection Level:  dBm Sets the minimum detection level.

Power Offset:  dB Sets the power offset value.

Report

File type:

Confirm information before generating report

Pass/Fail Threshold

Minimum power:  dBm Enables the pass/fail threshold validation for the minimum power value indicated.

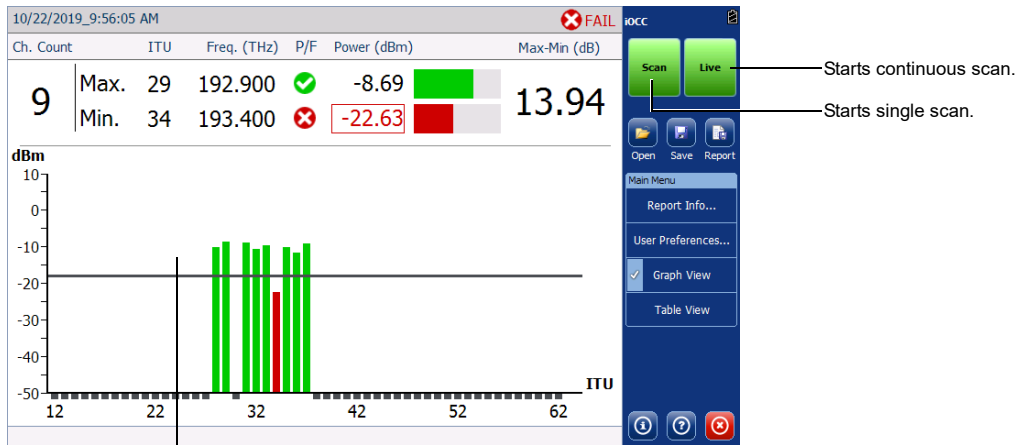
Revert to Factory Settings

Reverts to the factory settings.

OK Cancel

3 Tap.

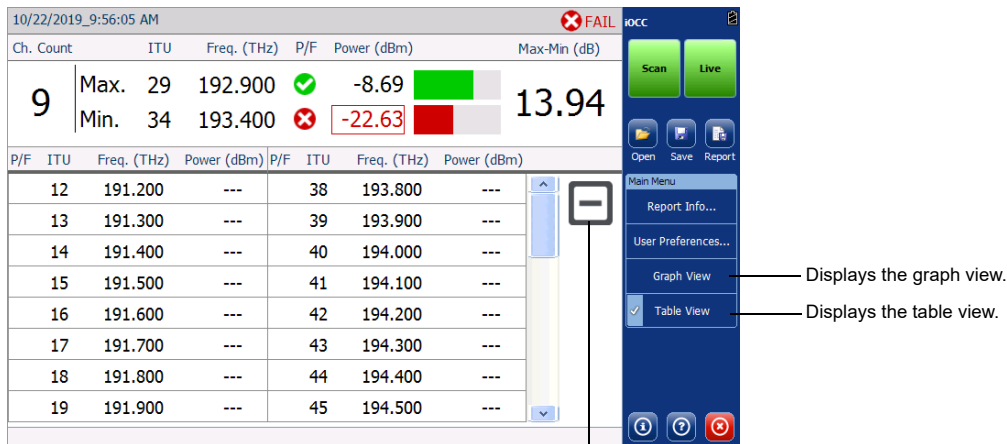
## Performing an Acquisition



Starts continuous scan.  
Starts single scan.

Tap once to zoom in. Tap again to zoom out. Drag the graph with your finger or stylus to move within the zoomed graph, or use the blue arrow buttons at the bottom of the screen when the view is zoomed in.

## Changing the Viewing Mode



Displays the graph view.  
Displays the table view.

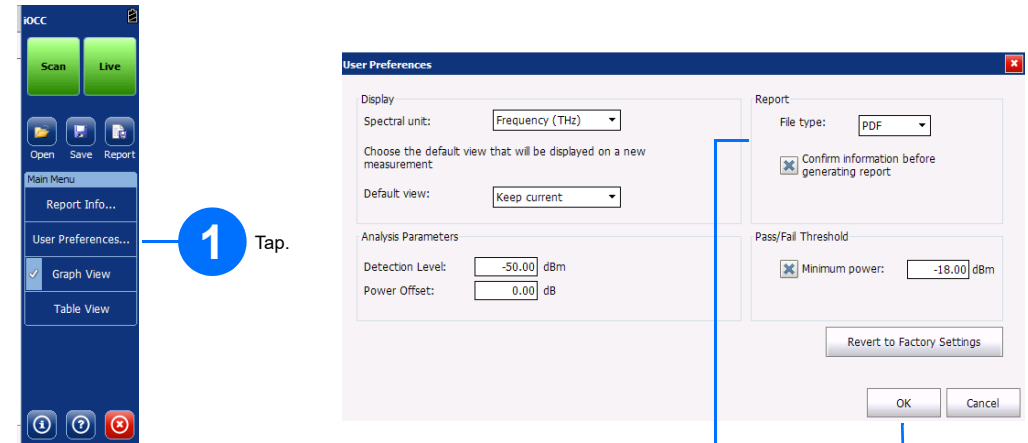
Switches between the full table and detected channels only views.

**Note:** If the result is fail, you can use the OTDR or iOLM application to troubleshoot the link.

## Managing Reports

You can create reports for your results in either XML or PDF format.

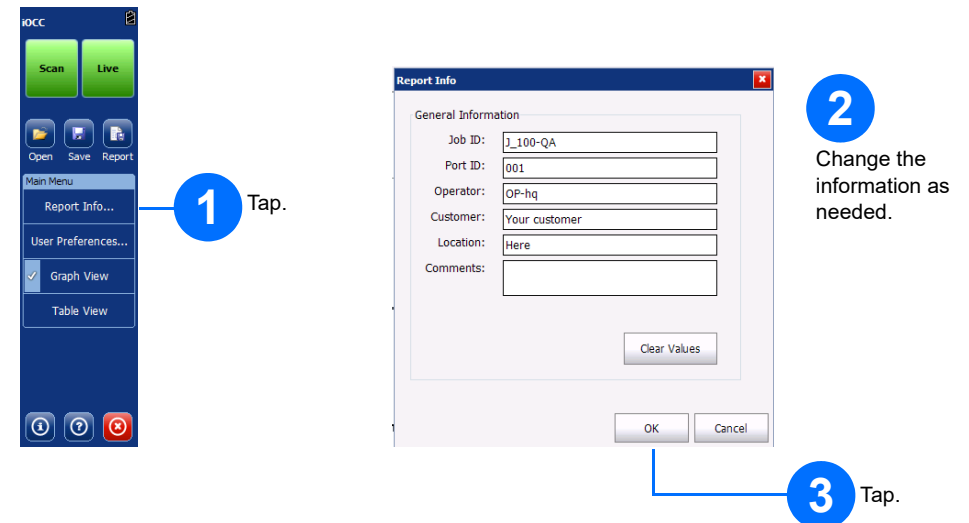
### Setting up Reports



Select format and whether you want to be prompted to enter details each time you generate a report.

2 Tap.  
3 Tap.

### Entering Report Information



2 Change the information as needed.

3 Tap.