

# CoLT-250+

NETWORK TESTING—COPPER ACCESS



The lightweight, handheld solution for testing  
ADSL2+, ADSL2, RE-ADSL and ADSL

- Simple, easy to use
- ADSL2+, ADSL2, RE-ADSL and ADSL service confirmation test set
- Connects easily to the pair at the NID or directly to the customer's DSL line jack
- Able to save multiple results in memory
- Field upgradable (software)
- Operates from disposable or rechargeable batteries
- Equipped to upload test results to a PC



## Lightweight ADSL2+ Test Solution



### Confirm Accurate Service

The CoLT-250+ determines the upstream and downstream ADSL2+, ADSL2, RE-ADSL, or ADSL connection rates at the subscriber's premise and ensures a properly provisioned circuit.

### Meet Regulatory Requirements

Many service providers must track the quality of their installations to internal quality requirements or for reporting to regulatory bodies. Multiple test results can be saved with a date and time stamp along with a circuit number or name entered by the technician. Test results can be uploaded to any standard PC for the purposes of record keeping or further analysis.

### Connect to Your PC

With the CoLT-View software for a PC, you can view test results, both in numeric and graphic form right on your PC's screen. View negotiated parameters and carrier load (bits/bin) data in CoLT-View or export the data to a spreadsheet program such as MS Excel™.



CoLT-View

## Fast Easy Verification of the Local Loop

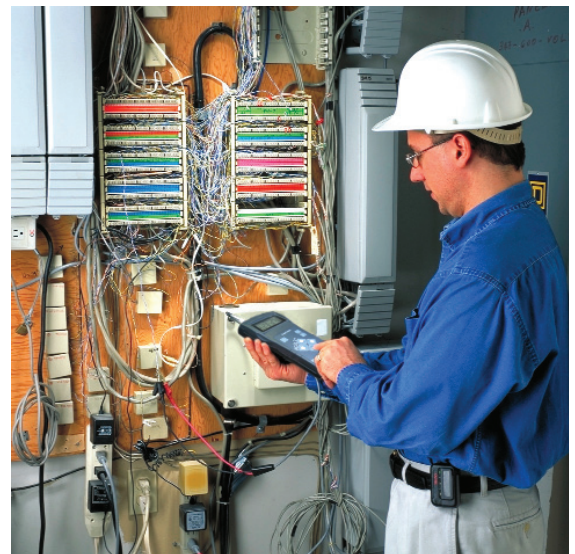


### Optimize the local loop

The CoLT-250+ confirms that the local loop can support the promised rate of DSL service. If the wiring does not support the promised rate or cannot deliver any service at all, the CoLT-250+ can be used to test at various points back through the network to hunt for the signal and track its degradation. The CoLT-250+ is easy to carry from point to point, battery powered, highly portable and designed for indoor and outdoor use.

### Works with the DSLAM

The CoLT-250+ utilizes an actual ADSL2+ modem inside. This means that the CoLT-250+ works with the latest DSLAM's, giving upstream/downstream connection information identical to that provided by the ATU-C's installed in the DSLAM's. Loop plant records and automated test systems can pre-qualify a loop, but are unable to predict with 100% certainty the level of DSL service that is delivered. Automated test systems that depend on narrow-band measurements cannot give a true picture of wideband loop quality. The CoLT-250+ displays the actual connection rates, as a subscriber would see them.



```
CONFIGURATION
Appl.v:      2.02
Mod.v:      E38.02.21
```

```
Main Menu B:90
*View Results
```

```
TEST RESULTS
Save results
Send to PC
*Send to Printer
```

CoLT-250+ screen shots

## GENERAL SPECIFICATIONS

Size (H x W x D)	235 mm x 114 mm x 38 mm (9 1/4" x 4 1/2" x 1 1/2")	
Power	4 x 'AA' sized Duracell Ultra™ Alkaline batteries	
Battery life	300 tests a	
Temperature	operating	10 °C to 50 °C (32 °F to 122 °F)
	storage	-40 °C to 70 °C (-40 °F to 158 °F)
Relative Humidity	5 to 95%	
Display	16 character x 4 line backlit LCD	
Line interface	RJ-45 at 100	
Serial port	RS232C/V.24 on DB-9 b	
Modem chipset	Conexant	

## STANDARDS SUPPORTED

ITU-T G.992.1 (ADSL) Annex A  
 ITU-T G.992.3 (ADSL2) Annex A  
 ITU-T G.992.5 (ADSL2+) Annex A, L c  
 ITU-T G.994.1 (G.hs)  
 ANSI T1.413 Issue 2

## NOTES

- Based on typical use.
- The RS232C/V.24 port is used for downloading data (connect rates and carrier load) and for the uploading of new software.
- Annex L is also known as Reach Extended ADSL.

## MEASUREMENTS

Maximum bit rates	Upstream and Downstream
Actual bit rates	Upstream and Downstream
Capacity	Upstream and Downstream
Signal to noise ratio margin	Upstream and Downstream
Output power	Upstream and Downstream
Attenuation	Upstream and Downstream

## ACCESORIES

1 x Softpack carrying case  
 1 x Operating Instructions  
 1 x RJ-45 to Telco clips/RJ-11 Test Cable  
 4 x 'AA' sized Duracell Ultra™ alkaline batteries



### Rugged Handheld Solutions

- |                 |                                      |
|-----------------|--------------------------------------|
| <b>OPTICAL</b>  | <b>COPPER ACCESS</b>                 |
| — OTDRs         | — ADSL/ADSL2+, SHDSL, VDSL test sets |
| — OLTs          | — VoIP and IPTV test sets            |
| — Power meters  | — Ethernet test sets                 |
| — Light sources | — POTS test sets                     |
| — Talk sets     |                                      |



### Platform-Based Solutions

- |                        |                                 |  |
|------------------------|---------------------------------|--|
| <b>OPTICAL FIBER</b>   | <b>DWDM TEST SYSTEMS</b>        | <b>TRANSPORT AND DATA COM</b>                |
| — OTDRs                | — OSAs                          | — Next-generation SONET/SDH and OTN testers  |
| — OLTs                 | — PMD analyzers                 | — SONET/DSn (DS0 to OC-192) testers          |
| — ORL meters           | — Chromatic dispersion analyzer | — SDH/PDH (64 kbit/s to STM-64) testers      |
| — Variable attenuators |                                 | — T1/T3, E1 testers                          |
|                        |                                 | — 10/100 Mbit/s and Gigabit Ethernet testers |
|                        |                                 | — Fibre Channel testers                      |
|                        |                                 | — 10 Gigabit Ethernet testers                |

EXFO Corporate Headquarters > 400 Godin Avenue, Quebec City (Quebec) G1M 2K2 CANADA | Tel.: 1 418 683-0211 | Fax: 1 418 683-2170 | info@EXFO.com

Toll-free: 1 800 663-3936 (USA and Canada) | www.EXFO.com

<b>EXFO America</b>	3701 Plano Parkway, Suite 160 Plano, TX 75075 USA	Tel.: 1 800 663-3936	Fax: 1 972 836-0164
<b>EXFO Europe</b>	Omega Enterprise Park, Electron Way Chandlers Ford, Hampshire S053 4SE ENGLAND	Tel.: +44 2380 246810	Fax: +44 2380 246801
<b>EXFO Asia</b>	151 Chin Swee Road, #03-29 Manhattan House SINGAPORE 169876	Tel.: +65 6333 8241	Fax: +65 6333 8242
<b>EXFO China</b>	No. 88 Fuhua, First Road, Central Tower, Room 801 Futian District Beijing New Century Hotel Office Tower, Room 1754-1755 No. 6 Southern Capital Gym Road	Shenzhen 518048, CHINA Beijing 100044 P. R. CHINA	Tel.: +86 (755) 8203 2300 Tel.: +86 (10) 6849 2738
			Fax: +86 (755) 8203 2306 Fax: +86 (10) 6849 2662

EXFO is certified ISO 9001 and attests to the quality of these products. This device complies with Part 15 of the FCC Rules. Operation is subject to the following two conditions: (1) this device may not cause harmful interference, and (2) this device must accept any interference received, including interference that may cause undesired operation. EXFO has made every effort to ensure that the information contained in this specification sheet is accurate. All of EXFO's manufactured products are compliant with the European Union's WEEE directive. For more information, please visit [www.EXFO.com/recycle](http://www.EXFO.com/recycle). However, we accept no responsibility for any errors or omissions, and we reserve the right to modify design, characteristics and products at any time without obligation. Units of measurement in this document conform to SI standards and practices. Contact EXFO for prices and availability or to obtain the phone number of your local EXFO distributor.

For the most recent version of this spec sheet, please go to the EXFO website at <http://www.EXFO.com/specs>

In case of discrepancy, the Web version takes precedence over any printed literature.