

EXFO

FTB-1

WIRELESS IS NOT ONLY ABOUT WIRELESS

Making FTTA deployment simple and efficient

- > New cell towers on air faster
- > Flawless migration from copper to fiber
- > First time right results – no guesswork



A wireless environment is not just about wireless testing, it's about testing the optical physical layer.

TRUST THE WORLDWIDE
OPTICAL TESTING LEADER



Start Stop Nav

Del Esc

1	ABC 2	DEF 3
GHI 4	JKL 5	MNO 6
PQRS 7	TUV 8	WXYZ 9
* .	@/& 0	# ±



ONE TECH.

With an unmatched level of intelligence and automation, the FTB-1 platform makes any field technician a fiber-test expert from day 1, regardless of fiber, copper or RF test experience.

One field technician does the job.

ONE TOOL.

Inspect and certify connector endfaces, characterize the total fiber-link and accurately assess conformity to CPRI/OBSAI specifications at the touch of a button.

One tool kit is all you need.

ONE TIME.

Powerful, fully automated test and in-depth analysis capabilities that eliminate guesswork and deliver 100% accuracy throughout every testing phase.

One job, no repeats.



See how EXFO can help you deploy FTFA faster, better.

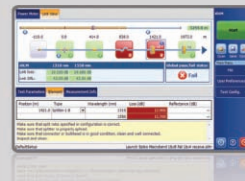
FTB-1 – Fiber-to-the-Antenna (FTFA) Test Solution

ConnectorMax
ANALYSIS SOFTWARE



Runs automated pass/fail connector analysis at the touch of a button

iOLM | intelligent Optical Link Mapper



Provides clear go/no-go verdict for total IL/ORL and for every link event

FTB-880 NetBlazer
Multiservice Tester



CPRI/OBSAI validation at up to 3.1 Gbit/s via BER testing



EXFO.com

EXFO