

## FTB-9310

NETWORK TESTING – OPTICAL



- Flat-top filter
- Low insertion loss
- High channel isolation
- 100-GHz channel spacing

### High-Performance Network Testing

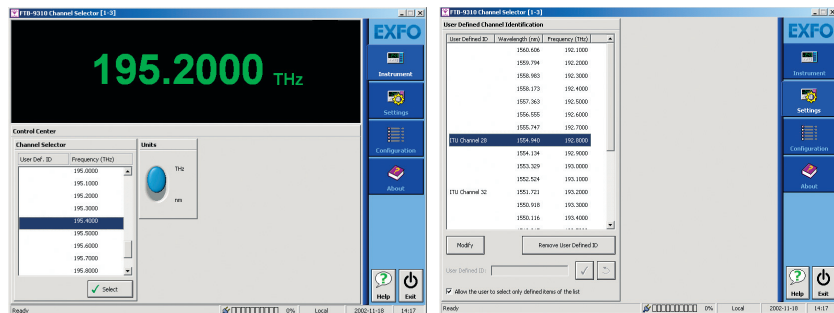
EXFO's FTB-9310 Channel Selector is a tunable filter for high-performance, advanced optical networking systems. Capable of selecting any one of 41 ITU channels within the C band, the FTB-9310 is an ideal solution for protocol and DWDM applications. Use it for dynamic provisioning or bit-error-rate (BER) performance monitoring for long-haul and metro networks.

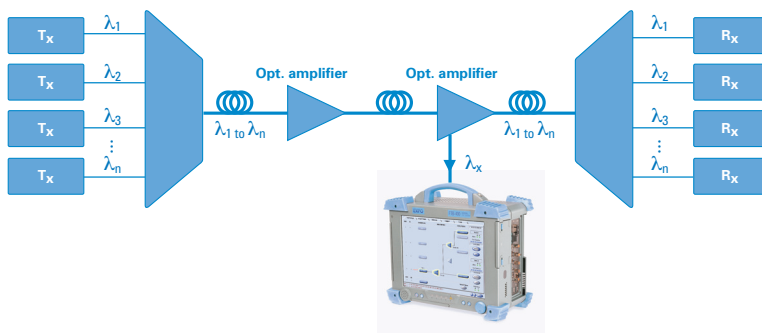
### Efficient Channel Isolation

Perform BER or protocol-layer testing on a single channel selected from the C band. The FTB-9310 is tailor-made for DWDM applications that require low loss, high channel isolation and versatility at the wavelength level. This two-slot module combines perfectly with the FTB-8000 SONET/SDH 10 Gbit/s Test Module. Both can be housed in the sturdy FTB-400 Universal Test System for a first-class go-anywhere solution. Add the FTB-5240B Optical Spectrum Analyzer for complete system commissioning.

### User-Friendly Software

View multiple channels and select the one you want to test—all on one easy-to-use touchscreen.



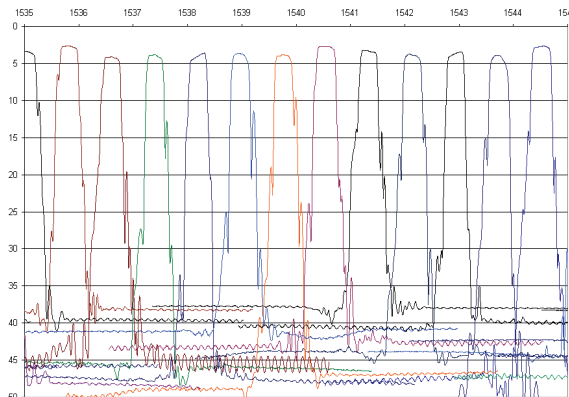


### SPECIFICATIONS <sup>a</sup>

Wavelength selection	Any ITU channel from 192.1 THz to 196.1 THz (C Band)
ITU channel isolation (typical)	40 dB
Bandwidth (at 3 dB) (typical)	320 pm
Insertion loss (typical)	4 dB (at ITU channel wavelength)
Tuning time for adjacent channel	1 s
PDL	≤ 0.5 dB

### GENERAL SPECIFICATIONS

Temperature		
operating	0 °C to 40 °C	
storage	-20 °C to 70 °C	
Relative humidity	95 %	
Size (H x W x D)	96 mm x 51 mm x 260 mm	(3 3/4 in x 2 in x 10 1/4 in)
Weight	1.1 kg	(2.4 lb)



### NOTES

a. At room temperature.

### ORDERING INFORMATION

#### FTB-9310-XX

##### Connector

EI-EUI-28 = UPC/DIN 47256  
EI-EUI-76 = UPC/HMS-10/AG  
EI-EUI-89 = UPC/FC narrow key

EI-EUI-90 = UPC/ST  
EI-EUI-91 = UPC/SC  
EI-EUI-95 = UPC/E-2000

Example: FTB-9310-EI-EUI-89

#### Rugged Handheld Solutions

##### OPTICAL

- OLTs
- Power meters
- Light sources
- Talk sets

##### COPPER ACCESS

- ADSL/ADSL2+, SHDSL, VDSL test sets
- VoIP and IPTV test sets
- Ethernet test sets
- POTS test sets

#### Platform-Based Solutions

##### OPTICAL FIBER

- OTDRs
- OLTs
- ORL meters
- Variable attenuators

##### DWDM TEST SYSTEMS

- OSAs
- PMD analyzers
- Chromatic dispersion analyzer

##### TRANSPORT AND DATACOM

- SONET/DSn (DS0 to OC-192) testers
- SDH/PDH (64 kb/s to STM-64) testers
- T1/T3 testers
- E1 testers
- 10/100 and Gigabit Ethernet testers
- Fibre Channel testers
- 10 Gigabit Ethernet testers

Find out more about EXFO's extensive line of high-performance portable instruments by visiting our website at [www.EXFO.com](http://www.EXFO.com).

EXFO Corporate Headquarters > 400 Godin Avenue, Quebec City (Quebec) G1M 2K2 CANADA | Tel.: 1 418 683-0211 | Fax: 1 418 683-2170 | [info@EXFO.com](mailto:info@EXFO.com)

Toll-free: 1 800 663-3936 (USA and Canada) | [www.EXFO.com](http://www.EXFO.com)

<b>EXFO America</b>	3701 Plano Parkway, Suite 160 Plano, TX 75075 USA	Tel.: 1 800 663-3936	Fax: 1 972 836-0164
<b>EXFO Europe</b>	Omega Enterprise Park, Electron Way Chandlers Ford, Hampshire S053 4SE ENGLAND	Tel.: +44 2380 246810	Fax: +44 2380 246801
<b>EXFO Asia</b>	151 Chin Swee Road, #03-29 Manhattan House SINGAPORE 169876	Tel.: +65 6333 8241	Fax: +65 6333 8242
<b>EXFO China</b>	No.88 Fuhua, First Road Central Tower, Room 801, Futian District Beijing New Century Hotel Office Tower, Room 1754-1755 No. 6 Southern Capital Gym Road	Shenzhen 518048, CHINA Beijing 100044 P. R. CHINA	Tel.: +86 (755) 8203 2300 Tel.: +86 (10) 6849 2738
		Fax: +86 (755) 8203 2306 Fax: +86 (10) 6849 2662	

EXFO is certified ISO 9001 and attests to the quality of these products. This device complies with Part 15 of the FCC Rules. Operation is subject to the following two conditions: (1) this device may not cause harmful interference, and (2) this device must accept any interference received, including interference that may cause undesired operation. EXFO has made every effort to ensure that the information contained in this specification sheet is accurate. All of EXFO's manufactured products are compliant with the European Union's WEEE directive. For more information, please visit [www.EXFO.com/recycle](http://www.EXFO.com/recycle). However, we accept no responsibility for any errors or omissions, and we reserve the right to modify design, characteristics and products at any time without obligation. Units of measurement in this document conform to SI standards and practices. Contact EXFO for prices and availability or to obtain the phone number of your local EXFO distributor.

For the most recent version of this spec sheet, please go to the EXFO website at <http://www.EXFO.com/specs>

In case of discrepancy, the Web version takes precedence over any printed literature.