

## Generating a Test Report

**1** Tap on the **Report** button.

The **Open** tab allows to open a previously saved report.

**2** Set the report preferences and tap on the **Save** button.

## Saving a Test Configuration

**1** Tap on the **Load/Save** button.

**2** Set the report preferences and tap on the **Save Config** button.

The **Load Config** button allows to open a previously saved configuration.

## Status Bar

Test Name	The name of the selected test.
Link Arrow	Green arrow: Ethernet Link up. Red arrow: Ethernet Link down.
Interface Speed	10 Mbit/s, 100 Mbit/s, or 1000 Mbit/s.
Interface Duplex	Auto, Half Duplex, or Full Duplex
Test Status	Current test status.

## Test Control Buttons

	<b>Start</b>	Starts test. Available when the test is not running.
	<b>Stop</b>	Stops test. Available when the test is running.
	<b>Load/Save</b>	Saves, loads, and deletes configuration file(s).
	<b>Report</b>	Saves and opens test report(s).

EXpert IP Test Tools is an EXFO platform-based software application that provides IP test tools into one application. It helps field technicians deal with the complex testing environments of today's networks.

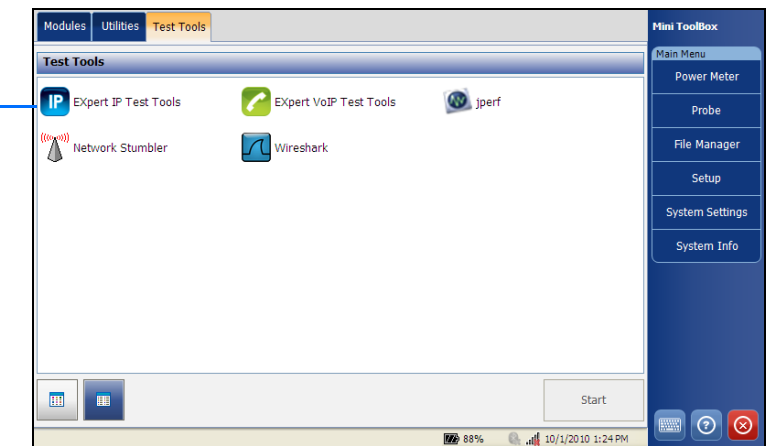
## Signal Connection

The EXpert IP Test Tools uses the 10/100/100 Mbit/s Ethernet RJ45 port of the EXFO's platform. Connect the 10/100/1000 Mbit/s electrical signal to be tested to the RJ45 port of the EXFO's platform.

## Starting the EXpert IP Test Tools

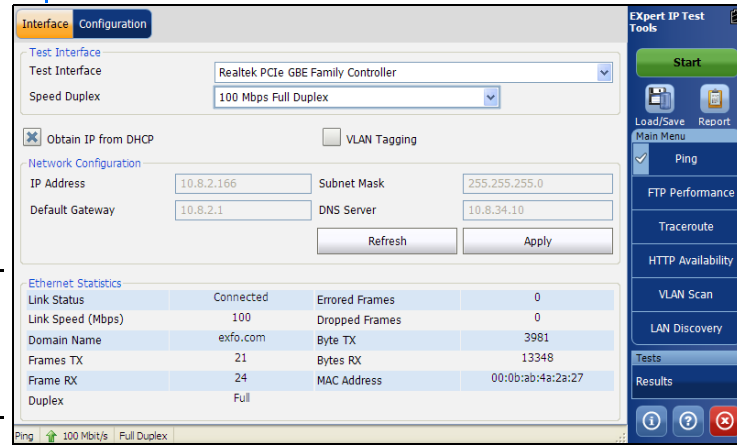
- 1** FTB-1  
FTB-1v2 and FTB-1v2 Pro  
FTB-2, FTB-2 Pro, and FTB-4 Pro  
FTB-200v2

From **Mini ToolBox**, tap on the **Test Tools** tab.  
From **Mini ToolBox X**, tap on the **Test Tools** tab.  
From **ToolBox X**, tap on the **Test Tools** button.  
From **Compact ToolBox**, tap on the **Programs** tab.
- 2** Select the **EXpert IP Test Tools** then tap on **Start**. The FTB-1 **Mini ToolBox** is shown below as an example.



# Selecting, Configuring, and Starting a Test

2 Tap on the **Interface** tab and configure the interface parameters.

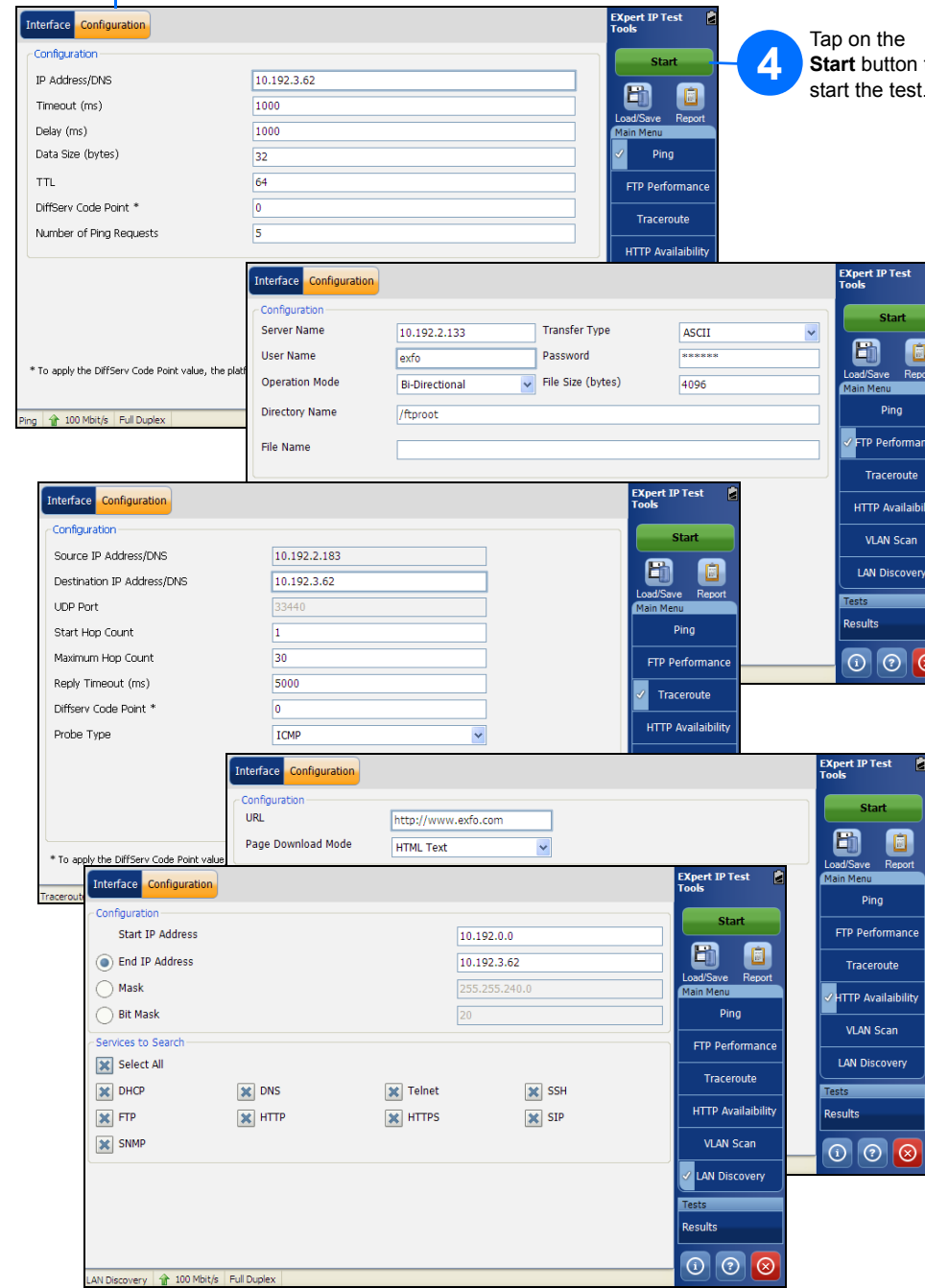


1 Tap on a test application.

- Ethernet Statistics** are displayed and updated every second.
- ▶ **Link Status** displays the status of the link: **Connected** or **Disconnected**.
  - ▶ **Link Speed (Mbps)** displays the speed of the Ethernet connection.
  - ▶ **Domain Name** displays the name of the connected domain.
  - ▶ **Frame TX** displays the total Ethernet frames transmitted.
  - ▶ **Frame RX** displays the total Ethernet frames received.
  - ▶ **Duplex** displays the Duplex mode of the link: **half**, **full**, or **auto**.
  - ▶ **Errored Frames** displays the number of Ethernet frames received with error.
  - ▶ **Dropped Frames** displays the number of Ethernet frames dropped.
  - ▶ **Bytes TX** displays the total data bytes transmitted.
  - ▶ **Bytes RX** displays the total data bytes received.
  - ▶ **MAC Address** displays the MAC Address of the EXFO's platform.

**Note:** *Bytes TX and Bytes RX indicate the total amount of data that has passed through the Ethernet interface either way.*

3 Tap on the **Configuration** tab and configure the specific test parameters. There is no specific configuration for VLAN Scan test.



4 Tap on the **Start** button to start the test.

5 Tap on the **Results** button to get results.

